



# Banquet Menus 2014

HOLIDAY INN KANSAS CITY NE



PAGE	TOPIC
3	Property Information
4	Meeting Room Info
5	Property Photography
7	Breakfast Selections
10	Packages
12	Lunch Selections
16	Dinner Selections
19	Hors d'oeuvres
21	Beverages
23	A/V Services

---

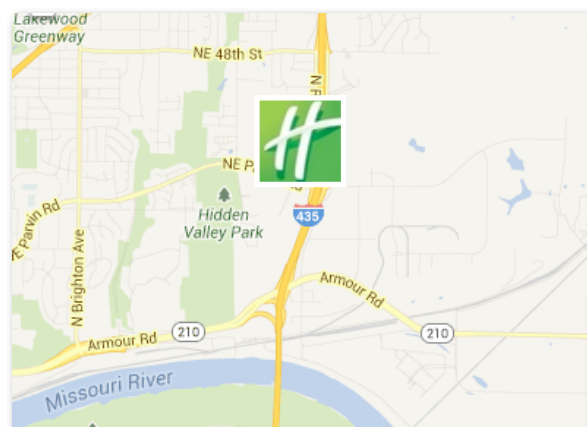
## HOLIDAY INN KANSAS CITY - NE

7333 NE Parvin Rd • Kansas City, MO 64117 • Tel 816 455 1060 • [hikcne.com](http://hikcne.com)

Menu prices are per person unless specified. Please add 20% gratuity to all rates and menu prices.  
Sales tax of 9.48% to be added to all food and beverage, and 7.48% to all non-food and beverage prices.  
Prices subject to change without notice.



- 164 spacious, modern guest rooms
- Plum's Restaurant - a full service restaurant serving a full breakfast buffet, dinner and room service
- Complimentary High Speed Internet access in all guestrooms and public space
- 2000 Square Foot ballroom divisible into 3 separate rooms
- Complimentary Business Center
- Indoor heated pool and Family Spa
- 24 Hour Fitness Center
- Free Shuttle service (within 5-mile radius)



## CHECK IN & CHECK OUT KANSAS CITY'S PREMIERE HOTEL DESTINATION

Offering ideal proximity to all major Kansas City businesses and attractions, the Holiday Inn Kansas City NE is a revolutionary accommodation for families and corporate travelers alike.

Less than a mile away from Worlds of Fun and Oceans of Fun, we offer cutting-edge amenities, a first-class staff and access to the "Heart of America," this hotel is poised to offer an unforgettable and comfortable stay while in Kansas City.

The hotel's location off I-435 in Kansas City is especially well suited to those who plan to take advantage of all the area offers, including the [Kansas City Zoo](#), Crown Center, Power and Light District, Country Club Plaza, Truman Sports Complex, home of the Chiefs and Royals and the Midwest's largest theme park [Worlds of Fun and Oceans of Fun](#) are both just ½ mile from the hotel.

And with our complimentary shuttle service to both parks you can save on parking fees. We also offer discounted single-day tickets for our guests meaning even more savings! You can also explore the historic and culturally vibrant Kansas City River Market, which features idyllic walkways and the area's best boutiques and markets.

## HOLIDAY INN KANSAS CITY - NE

7333 NE Parvin Rd • Kansas City, MO 64117 • Tel 816 455 1060 • [hikcne.com](http://hikcne.com)

Menu prices are per person unless specified. Please add 20% gratuity to all rates and menu prices.  
Sales tax of 9.48% to be added to all food and beverage, and 7.48% to all non-food and beverage prices.  
Prices subject to change without notice.



## OUR MEETING ROOMS

We offer 2,000 square feet of first-floor meeting space. We can accommodate up to 180 guests, and offer a set up style to meet your event objectives.

MAPLE ROOM	OAK ROOM	WALNUT ROOM
------------	----------	-------------

## MEETING ROOM CAPACITY AND DIMENSIONS

Room Name	Dimensions	Sq Ft	Ceiling	Classroom	Conference	Square	U Shape	Theatre	Rounds
Maple	27 X 24	648	9'	30	25	25	20	50	40
Oak	27 X 24	648	9'	30	25	25	20	50	40
Walnut	27 X 24	648	9'	30	25	25	20	50	40
Maple & Oak	27 X 48	1296	9'	60	35	35	35	125	90
Oak & Walnut	27 X 48	1296	9'	60	35	35	35	125	90
Maple, Oak & Walnut	27 X 72	1944	9'	100	60	60	60	200	120

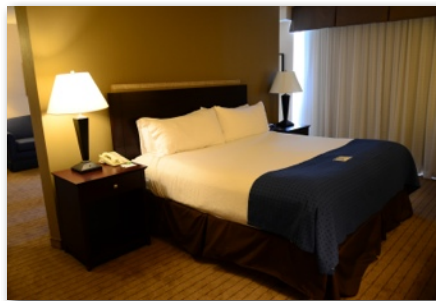
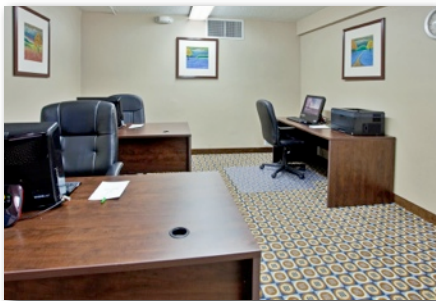
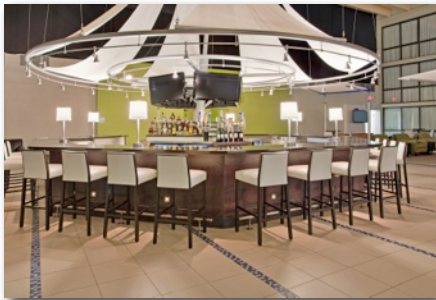
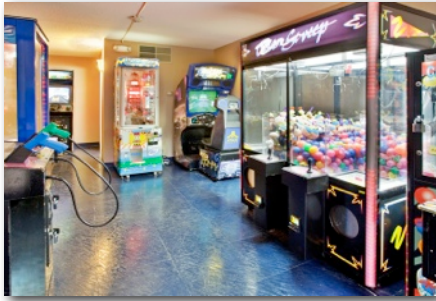
## HOLIDAY INN KANSAS CITY - NE

7333 NE Parvin Rd • Kansas City, MO 64117 • Tel 816 455 1060 • [hikcne.com](http://hikcne.com)

Menu prices are per person unless specified. Please add 20% gratuity to all rates and menu prices.  
Sales tax of 9.48% to be added to all food and beverage, and 7.48% to all non-food and beverage prices.  
Prices subject to change without notice.







## HOLIDAY INN KANSAS CITY - NE

7333 NE Parvin Rd • Kansas City, MO 64117 • Tel 816 455 1060 • [hikcne.com](http://hikcne.com)

Menu prices are per person unless specified. Please add 20% gratuity to all rates and menu prices.  
Sales tax of 9.48% to be added to all food and beverage, and 7.48% to all non-food and beverage prices.  
Prices subject to change without notice.







## HOLIDAY INN KANSAS CITY - NE

7333 NE Parvin Rd • Kansas City, MO 64117 • Tel 816 455 1060 • [hikcne.com](http://hikcne.com)

Menu prices are per person unless specified. Please add 20% gratuity to all rates and menu prices.  
Sales tax of 9.48% to be added to all food and beverage, and 7.48% to all non-food and beverage prices.  
Prices subject to change without notice.





### HOLIDAY INN KANSAS CITY - NE

7333 NE Parvin Rd • Kansas City, MO 64117 • Tel 816 455 1060 • [hikcne.com](http://hikcne.com)

Menu prices are per person unless specified. Please add 20% gratuity to all rates and menu prices.  
Sales tax of 9.48% to be added to all food and beverage, and 7.48% to all non-food and beverage prices.  
Prices subject to change without notice.





Breakfast packages include freshly brewed coffee and hot tea,  
and are available from 6:00am to 10:30am.

## Quick Continental

Variety of fruit juices, breakfast breads including muffins, bagels, danish, cream cheese, butter, jams

**\$7.95**

## Extended Continental

Variety of fruit juices, breakfast breads including muffins, bagels, danish, cream cheese, butter, jams, seasonal whole fruit, assorted yogurt, granola bars

**\$9.95**

## Full Continental

Variety of fruit juices, breakfast breads including muffins, bagels, danish, cream cheese, butter, jams

**\$11.95**

## Breakfast Buffet

Breakfast breads including muffins, bagels, Danish, cream cheese, butter, jams, seasonal whole fruit, crispy bacon, sausage patties, assorted cold cereals, milk, breakfast potatoes, scrambled eggs, warm biscuits and country gravy

**\$7.95**

---

## HOLIDAY INN KANSAS CITY - NE

7333 NE Parvin Rd • Kansas City, MO 64117 • Tel 816 455 1060 • [hikcne.com](http://hikcne.com)

Menu prices are per person unless specified. Please add 20% gratuity to all rates and menu prices.  
Sales tax of 9.48% to be added to all food and beverage, and 7.48% to all non-food and beverage prices.  
Prices subject to change without notice.





## Break Time

Break Packages are available in two-hour displays for freshness.

### Kid At Heart

Assorted cookie display, fudge brownies, iced tea, freshly brewed coffees

**\$7.95**

### Veg-Out

Assorted sliced vegetables, creamy peppercorn ranch dip, seasonal whole fruit, salted peanuts, iced tea

**\$8.95**

### Chipper And Dipper

Tortilla chips, chunky salsa, cheese dip, iced tea, ice cold lemonade

**\$7.95**

### All Day Refreshment Package

The all day refreshment package includes one continental breakfast, one morning break, and one afternoon break service. Break services are based on a two-hour display for freshness.

**\$17.95**

### Quick Continental

Fruit juices, breakfast breads, cream cheese, seasonal whole fruit

### Morning Break

Freshly brewed coffees, individual yogurts, granola topping

### Afternoon Break

Coffee, tea, assorted cookie and brownie display

## A La Carte Break Services

A La Carte items are priced by the quantity stated.

Assorted Flavored Yogurts	\$1.95 pp
Assorted Danish	\$21.95 p/doz
Assorted Donuts	\$19.95 p/doz
Assorted Muffins	\$19.95 p/doz
Reg. and Decaf Coffee	\$29.95 p/gal
Pretzels	\$9.95p/lb
Granola Bars	\$1.75
Bagels w/ Cream Cheese	\$19.95 p/doz
Snack Mix	\$11.95 p/lb
Flavored Hot Teas	\$1.00 p/bag
Assorted Soft Drinks	\$2.00 each
Bottled Water	\$2.00 each
Freshly Brewed Iced Tea	\$18.00 p/gal
Fresh Orange Juice	\$2.75 each
Mixed Nuts	\$22.00 p/lb
Seasonal Whole Fruit	\$1.50 pp
Chocolate Brownies	\$20.00 p/doz

## HOLIDAY INN KANSAS CITY - NE

7333 NE Parvin Rd • Kansas City, MO 64117 • Tel 816 455 1060 • hikcne.com

Menu prices are per person unless specified. Please add 20% gratuity to all rates and menu prices.  
Sales tax of 9.48% to be added to all food and beverage, and 7.48% to all non-food and beverage prices.  
Prices subject to change without notice.





## HOLIDAY INN KANSAS CITY - NE

7333 NE Parvin Rd • Kansas City, MO 64117 • Tel 816 455 1060 • [hikcne.com](http://hikcne.com)

Menu prices are per person unless specified. Please add 20% gratuity to all rates and menu prices.  
Sales tax of 9.48% to be added to all food and beverage, and 7.48% to all non-food and beverage prices.  
Prices subject to change without notice.



**PRICED AT \$25.00****Classic Continental (Service for 2 Hours)**

Fresh Assortment of Muffins and Danish Creamy Butter

Seasonal Whole Fruit

Orange Juice

Regular and Decaffeinated Coffee, Iced Tea and Hot Teas

**Mid-Morning Break (Service for 1 Hour)**

Regular and Decaffeinated Coffee, Iced Tea, Hot Tea and Granola Bars

**Mid-Afternoon Break (Service for 1 Hour)**

Assortment of Cookies and Brownies

Refreshments of Lunch Beverages

\* Included coffee may not exceed 5 Gallons per day

**Lunch (Service for 1 Hour)****Deli Buffet**

Tossed Green Salad with Assorted Dressings, Potato Salad, Cole Slaw, Pasta Salad, Deli-Style Ham, Turkey, Roast Beef, Swiss, Cheddar, American Cheeses, Chips, Assorted Breads

**Country Fried Steak Buffet**

Tossed Green Salad with Assorted Dressings, Crispy Country Fried Steak served with Country Style Gravy, Mashed Potatoes, Chef's choice of Vegetable and Rolls with Butter

**South of the Border Buffet**

Build your own

Beef Tacos, Chicken Fajitas, Refried Beans, Spanish Rice, Flour Tortillas, Salsa, Sour Cream, Shredded Cheese, Lettuce, Diced Onions and Tomatoes

**Italian Buffet**

Freshly Tossed Caesar Salad, Beef Lasagna, Chicken Parmesan, Steamed Seasonal Vegetables, Breadsticks and Warm Toasted Garlic Bread

**Groups of 15 or less, please choose from our Plated Lunch Entrée Section on our Plated Lunch Entrée Menu.**

**HOLIDAY INN KANSAS CITY - NE**

7333 NE Parvin Rd • Kansas City, MO 64117 • Tel 816 455 1060 • hikcne.com

Menu prices are per person unless specified. Please add 20% gratuity to all rates and menu prices.  
Sales tax of 9.48% to be added to all food and beverage, and 7.48% to all non-food and beverage prices.  
Prices subject to change without notice.







## HOLIDAY INN KANSAS CITY - NE

7333 NE Parvin Rd • Kansas City, MO 64117 • Tel 816 455 1060 • [hikcne.com](http://hikcne.com)

Menu prices are per person unless specified. Please add 20% gratuity to all rates and menu prices.  
Sales tax of 9.48% to be added to all food and beverage, and 7.48% to all non-food and beverage prices.  
Prices subject to change without notice.



## Light Plated Lunches

Light Lunches include freshly brewed coffees, iced tea

### BLT Salad

Combination of salad greens with ripe sliced tomatoes topped with fresh bacon bits and your choice of dressing

**\$12.95**

### Caesar Salad

Romaine lettuce tossed with croutons and Parmesan, tossed in Caesar dressing with lemon wedges. Add grilled chicken for \$2.00

**\$11.95**

### Chef Salad

Garden salad with ham, turkey, bacon, Swiss cheese, tomatoes, and hard boiled eggs

**\$11.95**

### Club Sandwich

Ham, turkey, bacon, lettuce, tomato, and Swiss cheese piled high on toasted white or wheat bread, served with chips or potato salad

**\$11.00**

### Roast Beef

Thinly sliced roast beef served atop toasted bread with au jus and the day's fresh vegetable

**\$12.00**

**Chef's Choice dessert for \$2.00 per serving**

## Boxed Lunches

### Club Sandwich

Ham, turkey, bacon, lettuce, tomato, and Swiss cheese piled high on toast served with potato chips, cookie, and whole seasonal fruit

### Ham and Cheese

Classic ham and cheese, lettuce, and tomato on a bakery roll-served with potato chips, cookie, and whole seasonal fruit

### Roast Beef

Roast beef, cheddar cheese, lettuce, and tomato on fresh bakery roll-served with potato chips, cookie, and whole seasonal fruit

## HOLIDAY INN KANSAS CITY - NE

7333 NE Parvin Rd • Kansas City, MO 64117 • Tel 816 455 1060 • [hikcne.com](http://hikcne.com)

Menu prices are per person unless specified. Please add 20% gratuity to all rates and menu prices.  
Sales tax of 9.48% to be added to all food and beverage, and 7.48% to all non-food and beverage prices.  
Prices subject to change without notice.



## LUNCH ENTREE - \$15 PER GUEST

All Entrées include freshly brewed coffees and iced tea

### Starter

**Choice of Caesar or House Salad**

**add a soup for \$1.95 per person**

**see sales manager for seasonal choices**

### Entrees (Choose One)

**All entrées include chef's choice of vegetable and starch**

#### Lemon Peppercorn Chicken

7 oz chicken breast grilled and sautéed in peppercorn gravy

#### Chicken Parmesan

7 oz chicken breast breaded and grilled to a golden brown topped with marinara and mozzarella

#### Chicken Fried Steak

Crispy country fried steak with country style gravy

#### Sliced Roast Beef

Thin slices of slowly cooked roast beef topped with au jus

#### Italian Meat Lasagna

Our Hearty meat lasagna served with toasted garlic bread

### Desserts (Choose One)

**Fudge Brownies**

**Fresh Baked Cookies**

**Dutch Apple Pie**

## SIGNATURE LUNCH BUFFETS

Lunch buffets are served with coffees, iced tea, breads, and Chef's selection of dessert. All buffets require a minimum of 15 guests. Lunch buffets available from 10:30am to 3:00pm.

### Deli Buffet - \$15

Tossed Green Salad with Assorted Dressings, Potato Salad, Cole Slaw, Pasta Salad, Deli-Style Ham, Turkey, Roast Beef, Swiss, Cheddar, American Cheeses, Chips, Assorted Breads

### Country Fried Steak Buffet - \$16

Tossed Green Salad with Assorted Dressings, Crispy Country Fried Steak served with Country Style Gravy, Mashed Potatoes, Chef's choice of Vegetable and Rolls with Butter

### South of the Border Buffet- \$17

Build your own Beef Tacos, Chicken Fajitas, Refried Beans, Spanish Rice, Flour Tortillas, Salsa, Sour Cream, Shredded Cheese, Lettuce, Diced Onions and Tomatoes

### Italian Buffet - \$18

Freshly Tossed Caesar Salad, Beef Lasagna, Chicken Parmesan, Steamed Seasonal Vegetables, Breadsticks and Warm Toasted Garlic Bread

### Kansas City Barbecue - \$19

Tossed Greens with Assorted Dressings, Cole Slaw, Potato Salad, BBQ Chicken, Sliced Brisket with BBQ Sauce, Buttered Corn, Baked Beans, Mashed Potatoes and Gravy

## HOLIDAY INN KANSAS CITY - NE

7333 NE Parvin Rd • Kansas City, MO 64117 • Tel 816 455 1060 • hikcne.com

Menu prices are per person unless specified. Please add 20% gratuity to all rates and menu prices.  
Sales tax of 9.48% to be added to all food and beverage, and 7.48% to all non-food and beverage prices.  
Prices subject to change without notice.





Plated Lunches are served with Mixed Field Green Salad and Chef's Selection of Dressings, Rolls & Butter, Chef's Selection of Dessert

Freshly Brewed Regular and Decaffeinated Coffee, Iced Tea

## Basil and Garlic Penne Pasta

Basil and Garlic Penne Pasta Tossed with a Mushroom, Roasted Garlic and Sun Dried Tomato Sauce

Served with Bread Sticks

**\$20 Per Guest**

### Entrée Selections:

Grilled Chicken Breasts \$23 Per Guest

Sautéed Shrimp \$25 Per Guest

## Chicken Fried Steak or Chicken Fried Chicken

Traditional Chicken Fried Steak or Chicken Fried

Chicken Topped with Pepper Cream Gravy

Whipped Garlic Red Potatoes and

Southern Style Green Beans

**\$22 Per Guest**

## Herb Roasted Pork Loin

Rosemary Roasted Pork Loin with Sauce Robert,

Warm Potato Salad and Summer Squash

**\$24 Per Guest**

## Chicken Monterey

Grilled Breast of Chicken Topped with Grilled

Shrimp, Sliced Tomato, Avocado, Melted Monterey

Jack Cheese and Tomato Salsa

Served with Rice Pilaf and

Mélange of Market Vegetables

**\$22 Per Guest**

## Marinated London Broil

Thin Sliced London Broil with a Mushroom Sauce

Rosemary Roasted Potatoes and Steamed Broccoli

**\$25 Per Guest**

## Oven Broiled Tilapia

Over Broiled Tilapia with a Pineapple-Mango Relish

Served with Rice Pilaf and Mélange of Market

Vegetables

**\$22 Per Guest**

## Vegetarian Options - \$20 Per Guest

### Eggplant Parmesan

Grilled Eggplant Topped with a Zesty Tomato Sauce, Served Over a Bed of

Herb Fresh Linguini Noodles with Italian Style Vegetables and Bread Sticks

### Pasta Primavera

Fettuccini Noodles Tossed with Basil Alfredo Sauce, Mixed with Garden

Vegetables, Topped with Fresh Parmesan Cheese and Bread Sticks

### Vegetable Lasagna

Lasagna Noodles Stacked with Garden Vegetables, Topped with a Zesty

Tomato Sauce and Bread Stick

## HOLIDAY INN KANSAS CITY - NE

7333 NE Parvin Rd • Kansas City, MO 64117 • Tel 816 455 1060 • hikcne.com

Menu prices are per person unless specified. Please add 20% gratuity to all rates and menu prices.  
Sales tax of 9.48% to be added to all food and beverage, and 7.48% to all non-food and beverage prices.  
Prices subject to change without notice.





## HOLIDAY INN KANSAS CITY - NE

7333 NE Parvin Rd • Kansas City, MO 64117 • Tel 816 455 1060 • [hikcne.com](http://hikcne.com)

Menu prices are per person unless specified. Please add 20% gratuity to all rates and menu prices.  
Sales tax of 9.48% to be added to all food and beverage, and 7.48% to all non-food and beverage prices.  
Prices subject to change without notice.



**PRICED AT \$24.95** All Entrées include freshly brewed coffees and iced tea

## Starter:

**Choice of Caesar or House Salad Included**

Add soup for \$1.95 a person

See manager for seasonal choices

## Entrée (Choose One):

*All entrees include chef's choice of vegetables and starch*

### Chicken Cordon Bleu

Boneless breast of chicken stuffed with ham and mozzarella

### Chicken Parmesan

7 oz chicken breast breaded and grilled to a golden brown topped with marinara and mozzarella

### Chicken Fried Steak

Crispy country fried steak with Country Style Gravy

### Sliced Roast Beef

Thin slices of slowly cooked roast beef topped with au jus

### Italian Meat Lasagna

Our Hearty meat lasagna served with toasted garlic bread

### Pork Tenderloin

Pork Tenderloin seasoned with Chef's special seasoning, slow roasted to perfect Tenderness, and topped with natural sauce

## Desserts:

(Choose One)

Cheesecake

Fresh Baked Cookies

Dutch Apple Pie

Fudge Brownies

German Chocolate Cake

---

## HOLIDAY INN KANSAS CITY - NE

7333 NE Parvin Rd • Kansas City, MO 64117 • Tel 816 455 1060 • hikcne.com

Menu prices are per person unless specified. Please add 20% gratuity to all rates and menu prices.  
Sales tax of 9.48% to be added to all food and beverage, and 7.48% to all non-food and beverage prices.  
Prices subject to change without notice.





## Dinner Buffets are served with:

Freshly brewed coffees, iced tea, breads, and Chef's selection of dessert. All buffets require a minimum of 40 guests. Dinner buffets available from 3:30pm to 10:00pm.

### Deli Buffet

Tossed Green Salad with Assorted Dressings, Potato Salad, Cole Slaw, Pasta Salad, Deli-Style Ham, Turkey, Roast Beef, Swiss, Cheddar, American Cheeses, Chips, Assorted Breads

**\$19**

### South of the Border Buffet

Build your own Beef Tacos, Chicken Fajitas, Refried Beans, Spanish Rice, Flour Tortillas, Salsa, Sour Cream, Shredded Cheese, Lettuce, Diced Onions and Tomatoes

**\$21**

### Italian Buffet

Freshly Tossed Caesar Salad, Spaghetti Noodles with Marinara Sauce on the side, Beefy Lasagna, Chicken Parmesan, Steamed Seasonal Vegetables, Breadsticks and Homemade Toasted Garlic Bread

**\$22**

### Homestyle Buffet

Tossed Salad Greens with Assorted Dressings, Cole Slaw, Potato Salad and Pasta Salad, Green Beans, Roasted Breast of Turkey, Roast Beef, Country Fried Steak, Steamed Seasonal Vegetables, Oven-Roasted Potatoes

**\$25**

### Kansas City Barbecue

Tossed Green Salad with Assorted Dressings, Cole Slaw, Potato Salad, Pasta Salad, BBQ Chicken, Sliced Brisket with BBQ Sauce, Buttered Corn, Baked Beans, Mashed Potatoes and Gravy, Sliced White Bread and Dinner Rolls

**\$24**

## HOLIDAY INN KANSAS CITY - NE

7333 NE Parvin Rd • Kansas City, MO 64117 • Tel 816 455 1060 • hikcne.com

Menu prices are per person unless specified. Please add 20% gratuity to all rates and menu prices.  
Sales tax of 9.48% to be added to all food and beverage, and 7.48% to all non-food and beverage prices.  
Prices subject to change without notice.





## HOLIDAY INN KANSAS CITY - NE

7333 NE Parvin Rd • Kansas City, MO 64117 • Tel 816 455 1060 • [hikcne.com](http://hikcne.com)

Menu prices are per person unless specified. Please add 20% gratuity to all rates and menu prices.  
Sales tax of 9.48% to be added to all food and beverage, and 7.48% to all non-food and beverage prices.  
Prices subject to change without notice.



## Hors d'Oeuvres

*Selections are per 50-piece order. Buffet style service included Butler passed service available, please add 10% to each selection.*

BBQ Meatballs	\$100
Bruschetta	\$125
Cocktail Franks	\$110
Crab Rangoon with Sweet & Sour Sauce	\$125
Crab-Filled Mushroom Caps	\$110
Crispy Chicken Tenders	\$95
Iced Shrimp Cocktail	\$150
Mozzarella Cheese sticks	\$100
Loaded Potato Skins	\$75
Spicy Buffalo Wings	\$110
Spring Rolls	\$110

## Cold Trays

*All medium trays are based on 50 pieces; all large trays are based on 100 pieces.*

### Mini-Cocktail Sandwiches:

Roast Beef, Sliced Ham, and Turkey on Dollar Rolls with Cheese and Condiments

Medium \$100      Large \$175

### Sliced Seasonal Fresh Fruit with Creamy Yogurt Fruit Dip

Medium \$125      Large \$175

### Assorted Cheeses with Crackers and Spicy Mustard

Medium \$145      Large \$195

### Garden Fresh Vegetable

With Creamy Peppercorn Ranch Dip

Medium \$125      Large \$175

---

## HOLIDAY INN KANSAS CITY - NE

7333 NE Parvin Rd • Kansas City, MO 64117 • Tel 816 455 1060 • [hikcne.com](http://hikcne.com)

Menu prices are per person unless specified. Please add 20% gratuity to all rates and menu prices.  
Sales tax of 9.48% to be added to all food and beverage, and 7.48% to all non-food and beverage prices.  
Prices subject to change without notice.







## HOLIDAY INN KANSAS CITY - NE

7333 NE Parvin Rd • Kansas City, MO 64117 • Tel 816 455 1060 • [hikcne.com](http://hikcne.com)

Menu prices are per person unless specified. Please add 20% gratuity to all rates and menu prices.  
Sales tax of 9.48% to be added to all food and beverage, and 7.48% to all non-food and beverage prices.  
Prices subject to change without notice.



*Beverage prices are per drink unless otherwise noted. There is a \$200.00 beverage minimum or a bartender fee will be applied per bar. Bar services available until 1:00am. Bartender fee is \$75 for the first 2 hours and \$25 for each remaining hour.*

### Host Bars

House Brand Cocktails	\$4 each
House Wines	
White Zinfandel, Cabernet	\$5 each
Sauvignon and Chardonnay	\$5 each
Assorted Juices	\$2 each
Soft Drinks	\$2
Coffee, Decaffeinated Coffee	\$29.95 /gal
Iced Tea	\$19.95 /gal

### Cash Bars

Premium Brand Cocktails	\$6
Domestic Beer	\$5
Imported Beer	\$5.50
House Wines	
White Zinfandel	\$6.50
Cabernet	\$6.50
Sauvignon	\$6.50
Chardonnay	\$6.50

### Domestic or Specialty Kegs

Pricing available upon request.

---

## HOLIDAY INN KANSAS CITY - NE

7333 NE Parvin Rd • Kansas City, MO 64117 • Tel 816 455 1060 • [hikcne.com](http://hikcne.com)

Menu prices are per person unless specified. Please add 20% gratuity to all rates and menu prices.  
Sales tax of 9.48% to be added to all food and beverage, and 7.48% to all non-food and beverage prices.  
Prices subject to change without notice.





## HOLIDAY INN KANSAS CITY - NE

7333 NE Parvin Rd • Kansas City, MO 64117 • Tel 816 455 1060 • [hikcne.com](http://hikcne.com)

Menu prices are per person unless specified. Please add 20% gratuity to all rates and menu prices.  
Sales tax of 9.48% to be added to all food and beverage, and 7.48% to all non-food and beverage prices.  
Prices subject to change without notice.





Wireless Handheld	\$150
Wireless Lavalier	\$150
LCD Projector	\$250
Screen	\$40
32" Flat Screen TV/DVD Combo	\$125
12'x 12' Dance Floor	\$150
Tripod Easel	\$15
Flipchart with Markers	\$40
Standing Podium	\$20
Extension Cords	Complimentary*
Power Strips	Complimentary*
Projection/AV Cart	Complimentary*
Wireless High Speed Internet Access	Complimentary

\* Limited quantity available

#### MEETING PLANNER'S PRESENTATION PACKAGE \$250

LCD Projector

Screen

AV cart

Extension cord

*\*Prices are subject to equipment availability*

## HOLIDAY INN KANSAS CITY - NE

7333 NE Parvin Rd • Kansas City, MO 64117 • Tel 816 455 1060 • hikcne.com

Menu prices are per person unless specified. Please add 20% gratuity to all rates and menu prices.  
Sales tax of 9.48% to be added to all food and beverage, and 7.48% to all non-food and beverage prices.  
Prices subject to change without notice.

