

WELCOME TO THE SUZHOU INSIDER COLLECTION

Truly memorable meetings and events with authentic local flavour – that is the inspiration behind the InterContinental Insider Collection.

Our network of hotels and resorts is global; our knowledge and expertise local, giving planners guaranteed choice, range and depth to add to any meeting or conference. Each hotel offers its own bespoke selection of services which are firmly rooted in their location and are responsibly guided by our partnership with National Geographic's Center for Sustainable Destinations.

The options are limitless, the local knowledge rich, the service professional and faultless, the delegate experience enriching and rewarding every time.

Sample for yourself some of our wonderful Suzhou experiences.

1 of 3 ▶

INTRODUCTION | LOCATIONS | SPEAKERS | COMMUNITY | INTERACTIONS | BREAKS | CONTACT US

INSIDER LOCATIONS

Choose an InterContinental venue for your event and a world of possibilities opens up. As locals, your hotel team hold the key to a side of your locality tourists never see. What and who they know gives you an exclusive mix of authentic venues and experiences to play with.

INSIDER SPEAKERS

Bring your event to life with an inspirational speaker – someone who can really strike a chord with your delegates and enrich their experience beyond measure. Fascinating and engaging, motivating Insider Speakers range from celebrities and cultural experts to sporting heroes. Whatever their passion, they all have a local connection and you will discover that their unique insights and local know-how make your event one to remember.

INSIDER COMMUNITY

There's nothing quite like immersing yourself in the community to gain an added depth and understanding to your experience in a new destination. Insider Community has been designed to benefit local people and create truly memorable and meaningful experiences for your delegates too.

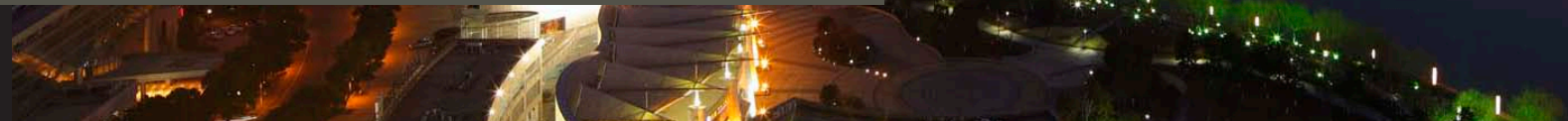
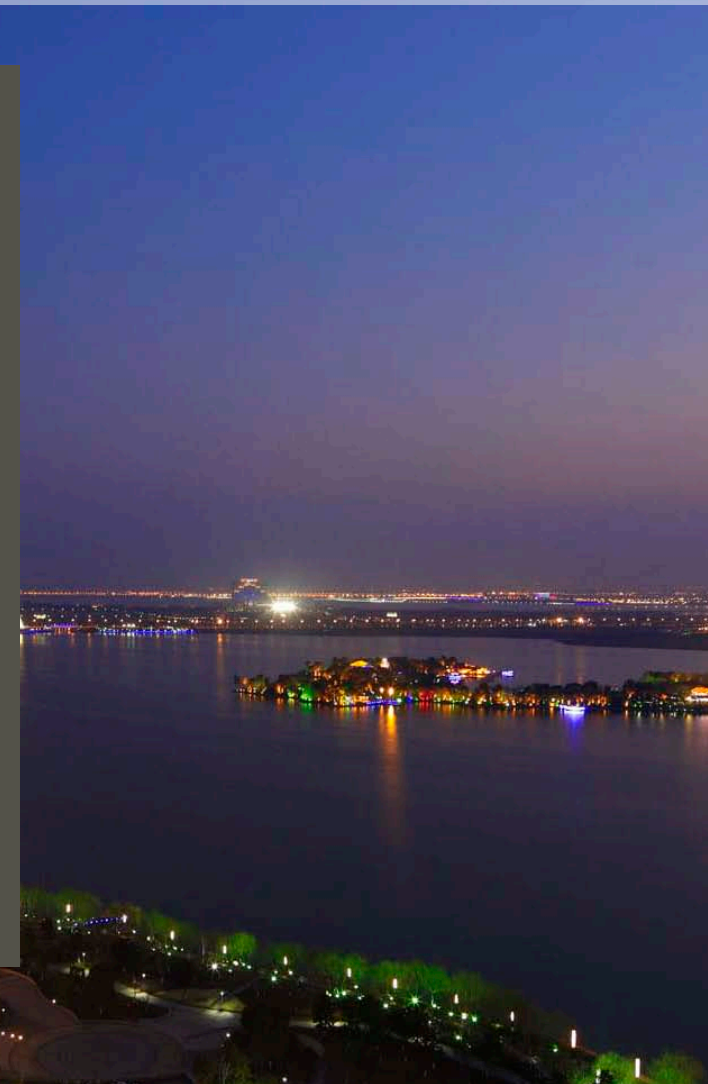
INSIDER INTERACTIONS

This team-building experience will help your delegates connect with each other as never before. Using the unique character, heritage or geography of your destination to inspire interaction, each experience, whether based on or off-site offers an original way to engage delegates and motivate them to build effective working relationships.

INSIDER BREAKS

With Insider Collection even your breaks are fulfilling experiences. From serving up a delicious lunch of provincial dishes for a taste of regional cuisine to spending some quality time with your Concierge team to get their best insider tips, a few minutes out of your busy schedule becomes a whole experience in itself.

◀ 2 of 3 ▶



INTRODUCTION | LOCATIONS | SPEAKERS | COMMUNITY | INTERACTIONS | BREAKS | CONTACT US

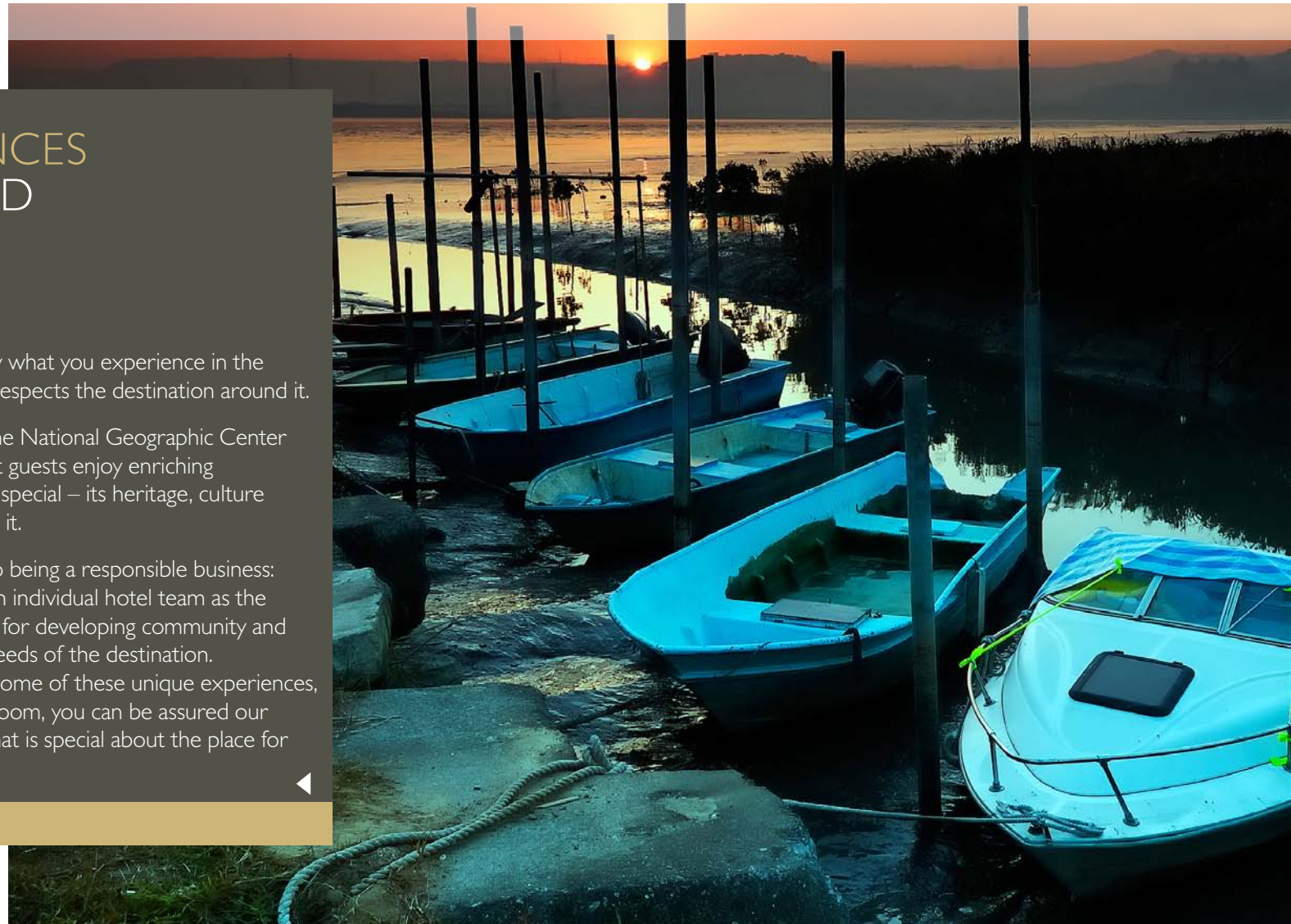
ENRICHING EXPERIENCES FOR OUR GUESTS AND OUR ENVIRONMENT

We believe that a responsible meeting is not only what you experience in the meeting room but also knowing that your hotel respects the destination around it.

We're proud to partner leaders in geotourism, the National Geographic Center for Sustainable Destinations. Our ambition is that guests enjoy enriching experiences that reveal what makes a place truly special – its heritage, culture and tradition – and the importance of protecting it.

At InterContinental we use a holistic approach to being a responsible business: to work from the grass roots up, recognising each individual hotel team as the experts best placed to use their local knowledge for developing community and environmental initiatives that meet the specific needs of the destination. This Insider Collection gives delegates access to some of these unique experiences, and for those meetings that stay in the meeting room, you can be assured our hotel is working behind the scenes to protect what is special about the place for fellow travellers.

◀ [Contact us](#) for pricing specific to your group.



INTRODUCTION | LOCATIONS | SPEAKERS | COMMUNITY | INTERACTIONS | BREAKS | CONTACT US

InterContinental Suzhou
288 Wang Dun Road, Suzhou Industrial Park | Jiangsu Province, 215028 | P.R. China
Go to www.intercontinental.com/meetings or [click here](#) to contact us

GO BACKSTAGE AT THE KUNQU OPERA CLUB

If you are looking for something a bit different for your next event, the Kunqu Opera Club hosts private tours and performances of *You Yuan Jing Meng* (*Interrupted Dream in the Garden*), an adaptation of the famous *Peony Pavilion*, a 400-year-old opera set in a Suzhou garden. Private cocktail receptions and dinner parties can also be arranged at the Club.

Keeping alive the 600-year-old tradition of Chinese Kunqu Opera, the You Yuan Jing Meng Kunqu Opera Club opened in 2010 on the site of a 1920s Kunqu Opera training school.

The world's first commercial Kunqu Club hosts professional Kunqu operatic performances and offers rare insights into training methods and backstage rituals – from witnessing rehearsals to the elaborate make-up application and colourful costumes.

1 of 2 ►

[Contact us](#) for pricing specific to your group.



INTRODUCTION | LOCATIONS | SPEAKERS | COMMUNITY | INTERACTIONS | BREAKS | CONTACT US

THE KUNQU OPERA CLUB

InterContinental Suzhou
288 Wang Dun Road, Suzhou Industrial Park | Jiangsu Province, 215028 | P.R. China
Go to www.intercontinental.com/meetings or [click here](#) to contact us

EXPERIENCE CONTEMPORARY CULTURE AT THE SUZHOU SCIENCE & CULTURAL ARTS CENTRE

Beside the InterContinental Suzhou, on the banks of Jinji Lake, the Suzhou Science & Cultural Arts Centre (SSCAC). An eye-catching contemporary icon, created by French architect Paul Andreu, who also designed the National Centre for the Performing Arts in Beijing. From private cocktail parties to large-scale concerts and dinner shows, the SSCAC provides unlimited scope for theatrical events with 'wow' factor.

This impressive arts, culture and lifestyle complex hosts world-class performers at the state-of-the-art Grand Theatre and 500-seat Dinner Theatre. It also houses a Cineplex, IMAX Theatre, shopping mall, exhibition galleries, function halls and horticultural gardens.

For an unforgettable event for your delegates, this venue is a must.

◀ [Contact us](#) for pricing specific to your group.



INTRODUCTION | LOCATIONS | SPEAKERS | COMMUNITY | INTERACTIONS | BREAKS | CONTACT US

THE SUZHOU SCIENCE & CULTURAL ARTS CENTRE

InterContinental Suzhou
288 Wang Dun Road, Suzhou Industrial Park | Jiangsu Province, 215028 | P.R. China
Go to www.intercontinental.com/meetings or [click here](#) to contact us

WATCH A TRADITIONAL FOLK ARTIST IN ACTION

Taohuawu woodblock printing is a Suzhou folk tradition dating back to the Ming Dynasty (1368-1644) and this is a unique opportunity for your delegates to learn from a master.

The intricate designs, involving drawing, block carving, printing and watercolour processing, often depict historical events and local folklore. They were used to illustrate novels and storybooks, and became popular during the Qing Dynasty in the production of Chinese New Year cards and posters.

Only 10 professional Taohuawu woodblock craftsmen remain in Suzhou. 70-year-old Xu Xiao Gang is one of these revered folk artists. His family has been creating elegant Taohuawu prints for generations and he will share the secrets of this classic art and give delegates a chance to get creative with their own carvings.

1 of 2 ►

[Contact us](#) for pricing specific to your group.



INTRODUCTION | LOCATIONS | SPEAKERS | COMMUNITY | INTERACTIONS | BREAKS | CONTACT US

TAOHUAWU WOODBLOCK PRINTING

InterContinental Suzhou
288 Wang Dun Road, Suzhou Industrial Park | Jiangsu Province, 215028 | P.R. China
Go to www.intercontinental.com/meetings or [click here](#) to contact us

MEET A KUNQU OPERATIC MASTER

A UNESCO Masterpiece of Oral and Intangible Heritage of Humanity, Suzhou's Kunqu Opera is one of the oldest forms of Chinese opera still in existence today.

InterContinental Suzhou works closely with the You Yuan Jing Meng Kunqu Opera Club, and can arrange for one of the troupe's operatic masters Lu Fu Hai to offer your delegates a unique personal insight into this precious ancient Chinese art.

From learning about the rhythms and techniques of the popular operatic form to watching how the amazing face paint is applied and even joining in a performance, delegates will enjoy an exhilarating experience and leave with newfound cultural insights.

◀
[Contact us](#) for pricing specific to your group.



INTRODUCTION | LOCATIONS | SPEAKERS | COMMUNITY | INTERACTIONS | BREAKS | CONTACT US

YOU YUAN JING MENG KUNQU OPERA CLUB PERFORMANCE

InterContinental Suzhou
288 Wang Dun Road, Suzhou Industrial Park | Jiangsu Province, 215028 | P.R. China
Go to www.intercontinental.com/meetings or [click here](#) to contact us

HELP LOCAL CHILDREN AND BOND AS A TEAM

The Suzhou Boai School cares for children from pre-school to junior high with physical, mental and special learning needs by offering full board and education. The school also offers Chinese and western integrated medical therapies and rehabilitative treatment.

InterContinental Suzhou assists by providing corporate volunteer activities to help make the children's lives happy and fulfilled. Among the activities offered are preparing and serving meals and organising sporting events. We can organise similar events for your group to give delegates the opportunity to enjoy a hugely rewarding personal experience with some very special children.

1 of 2 ►

[Contact us](#) for pricing specific to your group.



INTRODUCTION | LOCATIONS | SPEAKERS | COMMUNITY | INTERACTIONS | BREAKS | CONTACT US

THE SUZHOU BOAI SCHOOL

InterContinental Suzhou
288 Wang Dun Road, Suzhou Industrial Park | Jiangsu Province, 215028 | P.R. China
Go to www.intercontinental.com/meetings or [click here](#) to contact us

GIVE BACK TO THE LOCAL COMMUNITY

The Suzhou JinChang Pei Zhi School helps local children with learning disabilities by teaching them practical creative skills, such as sewing, crafts and housework.

Your delegates are invited to join in with the children's activities, help to organise sporting events and training. Work as a team and enjoy the rewards of making a difference together.

[Contact us](#) for pricing specific to your group.



INTRODUCTION | LOCATIONS | SPEAKERS | COMMUNITY | INTERACTIONS | BREAKS | CONTACT US

THE SUZHOU JINCHANG PEI ZHI SCHOOL

InterContinental Suzhou
288 Wang Dun Road, Suzhou Industrial Park | Jiangsu Province, 215028 | P.R. China
Go to www.intercontinental.com/meetings or [click here](#) to contact us

PARTICIPATE IN A DRAGON BOAT RACE ON JINJI LAKE

Canoeing racing is an exciting program involving teams of rowers competing in colourful carved wooden canoes, as supporters cheer them on with drums and chanting from the banks.

Why not host your very own water race on Jinji Lake – Suzhou's largest expanse of water right beside the InterContinental Suzhou?

Packed with fun and excitement, this is an ideal activity for team building. We can even arrange traditional drummers for added atmosphere. The finish line and disembarkation area is right in front of the hotel, so you can wind down with a waterfront reception after the race.

1 of 2 ►

[Contact us](#) for pricing specific to your group.



INTRODUCTION | LOCATIONS | SPEAKERS | COMMUNITY | INTERACTIONS | BREAKS | CONTACT US

DRAGON BOAT RACE ON JINJI LAKE

InterContinental Suzhou
288 Wang Dun Road, Suzhou Industrial Park | Jiangsu Province, 215028 | P.R. China
Go to www.intercontinental.com/meetings or [click here](#) to contact us

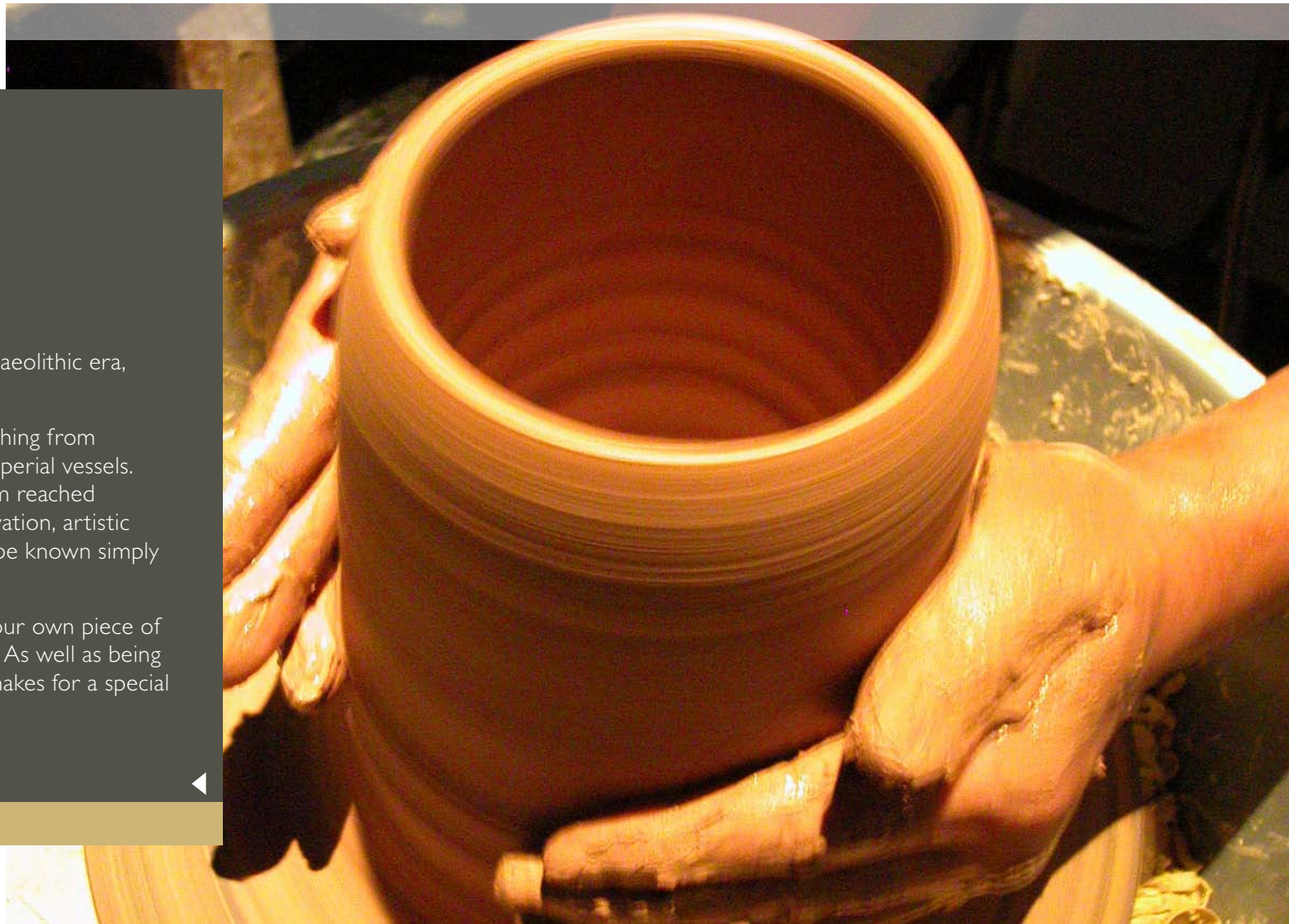
MAKE YOUR OWN EXQUISITE CHINESE PORCELAIN

Ceramic making in China dates back to the Palaeolithic era, some 11,000 years ago.

Local kaolin clay was utilised for making everything from earthenware tools to exquisite hand-glazed Imperial vessels. In fact, porcelain making in the Middle Kingdom reached such levels of mass production, technical innovation, artistic refinement and global impact, that it came to be known simply as 'china'.

Try your hand at sculpting, firing and glazing your own piece of china under the guidance of our local artisans. As well as being a convivial and creative DIY experience, this makes for a special souvenir of your time in Suzhou.

[Contact us](#) for pricing specific to your group.



INTRODUCTION | LOCATIONS | SPEAKERS | COMMUNITY | INTERACTIONS | BREAKS | CONTACT US

MAKE YOUR OWN PIECE OF CHINA

InterContinental Suzhou
288 Wang Dun Road, Suzhou Industrial Park | Jiangsu Province, 215028 | P.R. China
Go to www.intercontinental.com/meetings or [click here](#) to contact us

TAKE A WHIRLWIND GOURMET TRIP AROUND ASIA

InterContinental Suzhou's international master chefs enliven your meeting breaks by conjuring up the fanfare and flavours of Asia.

Five atmospheric live cooking stations – spanning Chinese, Malay, Singaporean, Indian and Thai cuisines – will each be manned by an InterContinental specialist chef. Whether delegates 'pull' Malay milk tea, flip Indian roti prata or serve up Thai sticky rice and mango desserts, the culinary theatre promises a real feast for all the senses.

Don't miss the Chinese stall set up on antique mah-jong tables, serving traditional snacks like piping hot You Tiao (Chinese fried doughnuts) and classic Suzhonese Haitang Cake.

1 of 2 ►

[Contact us](#) for pricing specific to your group.



INTRODUCTION | LOCATIONS | SPEAKERS | COMMUNITY | INTERACTIONS | BREAKS | CONTACT US

CULINARY THEATRE

InterContinental Suzhou
288 Wang Dun Road, Suzhou Industrial Park | Jiangsu Province, 215028 | P.R. China
Go to www.intercontinental.com/meetings or [click here](#) to contact us

WORK UP A HEALTHY APPETITE

InterContinental Suzhou champions fresh, organic ingredients and healthy seasonal dining at all its restaurants. This healthy meeting break menu is packed with wholesome goodness bursting with flavour, accompanied by a wide range of healthy teas.

InterContinental's master chefs prepare gourmet delights using organic fruits and vegetables freshly plucked from the hotel garden. Ingredients are sliced and plated à la minute to ensure ultimate freshness and nutrition and exquisite fruit desserts are created before your eyes.

As well as being delicious and entertaining, the healthy-living meeting break offers useful wellness tips and promises to keep delegates alert and invigorated for the upcoming sessions.

◀ [Contact us](#) for pricing specific to your group.



INTRODUCTION | LOCATIONS | SPEAKERS | COMMUNITY | INTERACTIONS | BREAKS | CONTACT US

HEALTHY-LIVING MEETING BREAK

InterContinental Suzhou
288 Wang Dun Road, Suzhou Industrial Park | Jiangsu Province, 215028 | P.R. China
Go to www.intercontinental.com/meetings or [click here](#) to contact us

THANK YOU

Contact us to learn more about the Suzhou Insider Collection and how we can help you create a truly memorable experience with authentic local flavour.

Whichever Insider Collection experience is right for you, you can be assured that it reflects the best principles of Responsible Business, a commitment demonstrated by our partnership with the National Geographic Center for Sustainable Destinations.

Email address: events@intercontisuzhou.com

